



## TRADEGEM II S9141TC2WH - 9W

Dimmable IP44, 9 watt LED downlight with selectable CCT

### Application

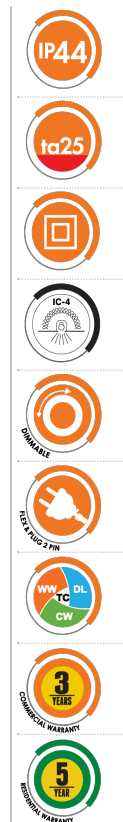
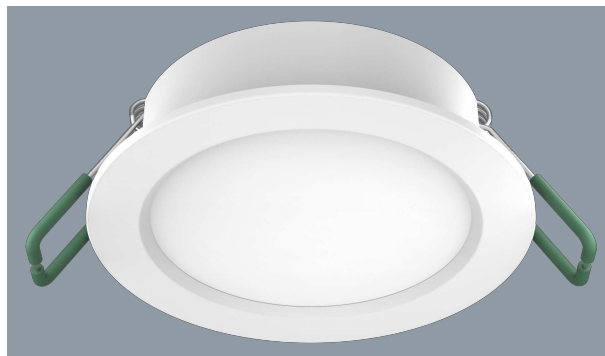
Ideal for any residential or commercial interior space

### Design Specifications


- Easy selectable CCT, 3000K/4000K/5700K
- Durable PA and aluminium reinforced body profile, IC-4 rated
- Remote constant current trailing edge dimmable LED driver, with flex and plug
- Quality opal polycarbonate diffuser
- High efficiency LED optics
- Stylish white finish, Deco ring options available - Satin Nickel (S9140SN/RING)

### Performance

- Dimmable - **YES**
- Dimmer Type - **Trailing edge**



### Technical Specification

Product	Model No.	Input Voltage (V/AC)	Power (W)	Lumens (lm)	CCT (K)	Beam Angle (°)
	S9141TC2WH	240	9	900/1050/1000	3000/4000/5700	110

Dimmable	CRI	Body Colour	Cut Out (mm)	Diameter (mm)	Dim (mm)
YES	80	WHITE	92	104	26(H)

Due to continued product and technology enhancements, data sourced from sal.net.au shall not form part of any contract and or technical performance guarantee unless expressly confirmed in writing by SAL at the time of order. Products are sold in accordance with [SAL Terms and Conditions of sale](#) and all images shown are for illustration purposes only and may vary from the actual colour or finish. Unless specifically stated, all IP ratings nominated for Interior products are from "below the ceiling".

# THE SFI SYSTEM ELIMINATES LED FLICKERING.

**SIMPLY  
MATCH THE  
ECOGEN SFI  
DOWNLIGHT  
WITH THIS  
SDD400SFI  
DIMMER.**



**DIM with  
FLICKER  
CONTROL**

For related  
products  
please  
scan me

